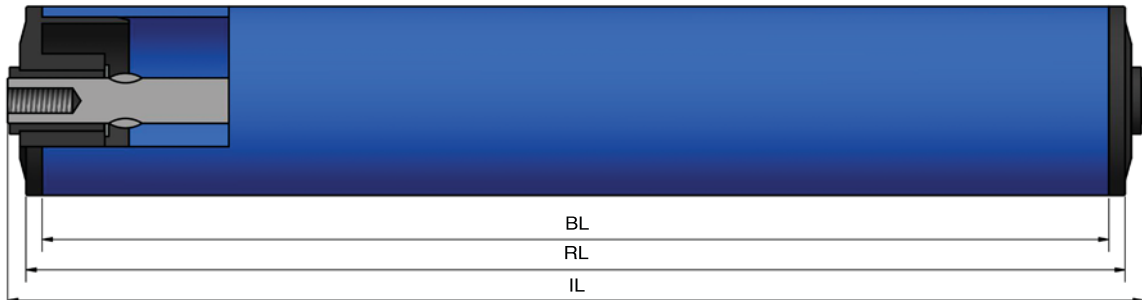


Type 150



STAS

T +31 (0) 229 28 29 40
www.eschgroup.nl



HTEC

T +31 (0) 416 31 66 00
www.eschgroup.nl



CONVEYOR

T +31 (0) 416 31 56 56
www.eschgroup.nl



		IL = RL +				CODE
	BUITENDRAAD	21	23	25	25	UD
	VERJONGING	12	12	12	12	VJ
	BINNENDRAAD	12	12	12	12	ID
	GLAD					GA
	SLEUTELWIJDTE	12	12	12	12	SW
	VEREND					VA
	AS Ø	8	10	12	14	

		DRAAGVERMOGEN*	RL
STALEN BUIS			
RVS BUIS			
KUNSTSTOF BUIS	50 x 2,8	40 kg	600 mm

OMSCHRIJVING

Dit is een rol met thermoplastisch kunststof lage-relement met glijlagerbus.

Tevens asloos verkrijgbaar.

Toepassing: Goedkope uitvoering ideaal toepasbaar in sorteerinstallaties voor groenten en fruit en als begeleidingsrol.

Keuze oppervlaktebehandelingen:

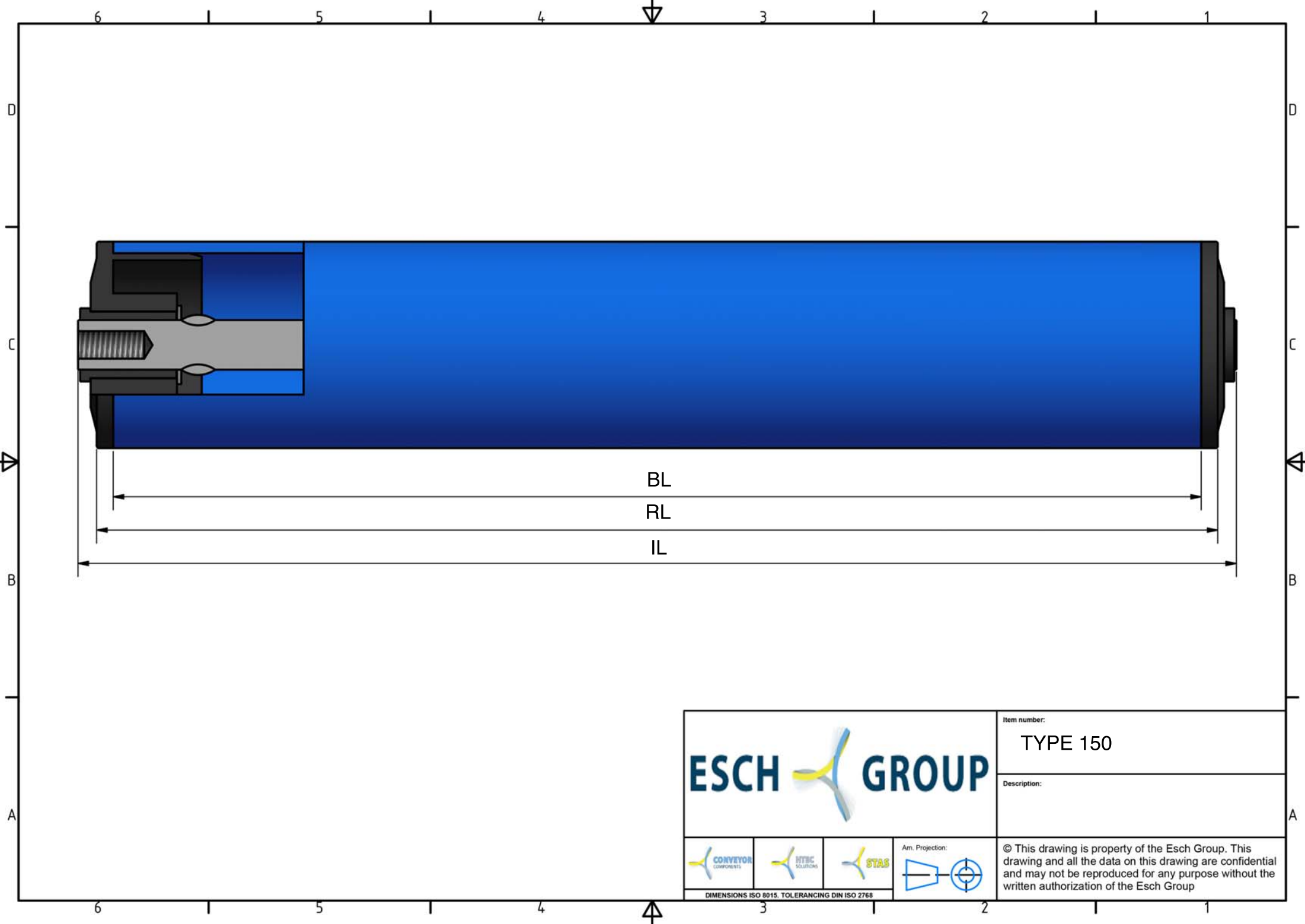
Verchromen





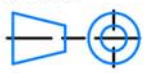
Epoxeren

Elektrolytisch verzinken

150

* DRAAGVERMOGEN BIJ VLAKBELASTING
GEBASEERD OP AANGEGEVEN RL.



			Item number:	TYPE 150
			Description:	
			Ann. Projection: 	© This drawing is property of the Esch Group. This drawing and all the data on this drawing are confidential and may not be reproduced for any purpose without the written authorization of the Esch Group
DIMENSIONS ISO 8015. TOLERANCING DIN ISO 2768				