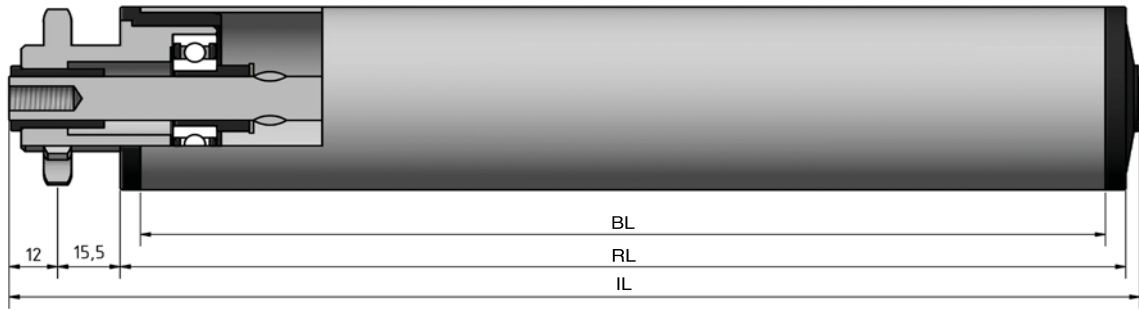


Type 626



STAS

T +31 (0) 229 28 29 40
www.eschgroup.nl



HTEC

T +31 (0) 416 31 66 00
www.eschgroup.nl



CONVEYOR

T +31 (0) 416 31 56 56
www.eschgroup.nl



		IL = RL +			CODE
	BUITENDRAAD	51	53	55	UD
	VERJONGING	40	40	40	VJ
	BINNENDRAAD	40	40	40	ID
	GLAD				GA
	SLEUTELWIJDTE	40	40	40	SW
	VEREND				VA
	AS Ø	10	12	14	

		DRAAGVERMOGEN*	RL
STALEN BUIS	50x1,5	100 kg	1500 mm
	50x2	100 kg	1500 mm
	50x3	100 kg	1500 mm
	60x2	100 kg	1849 mm
	63,5x2,9	100 kg	1849 mm
	80x2	100 kg	1849 mm
RVS BUIS	50x1,5	100 kg	1500 mm
	50x2	100 kg	1500 mm
	60,3x2	100 kg	1849 mm
	80x2	100 kg	1849 mm
KUNSTSTOF BUIS	50x2,8	100 kg	600 mm
	63x3	100 kg	850 mm
	90x7	100 kg	1100 mm

OMSCHRIJVING

Enkelrijig triebstock aandrijfelement 1/2"x5/16"-11* tanden, steekcirkel=45,07 mm en groefkogellager. Vaste aandrijving door **perspassing**. Dit type is alleen inzetbaar bij **continu aandrijving** en geen start stop situaties.

*Afwijkende tanden op aanvraag

Tegenlagering: Type 190, 200, 201, 202, 250 en 300.

Keuze oppervlaktebehandelingen:

Verchromen

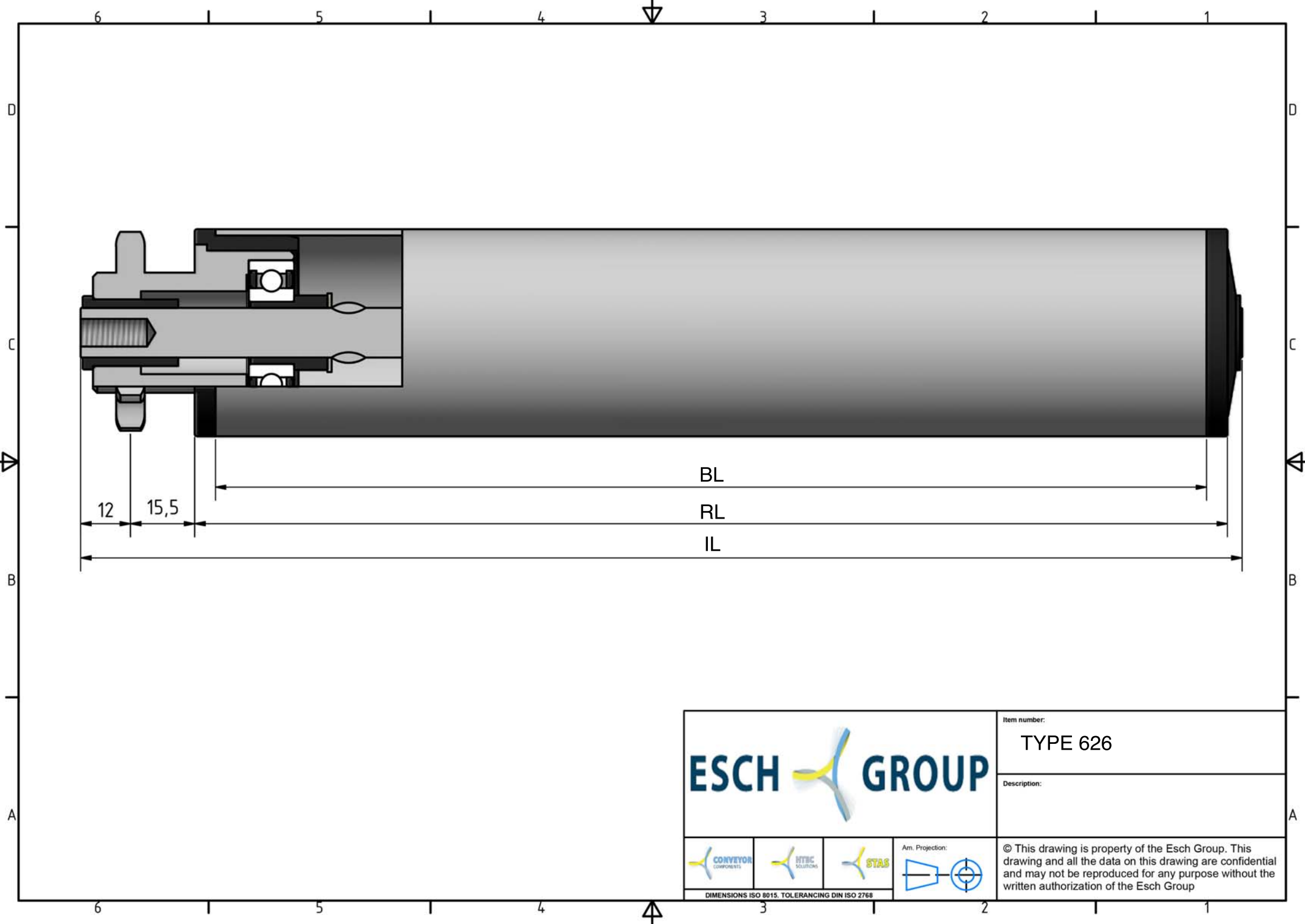
Epoxeren





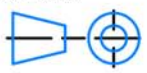
Elektrolytisch verzinken

626



* DRAAGVERMOGEN BIJ VLAKBELASTING
GEBASEERD OP AANGEGEVEN RL.



			Item number:
			TYPE 626
Description:			
			Arr. Projection: 
<small>DIMENSIONS ISO 8015. TOLERANCING DIN ISO 2768</small>			© This drawing is property of the Esch Group. This drawing and all the data on this drawing are confidential and may not be reproduced for any purpose without the written authorization of the Esch Group