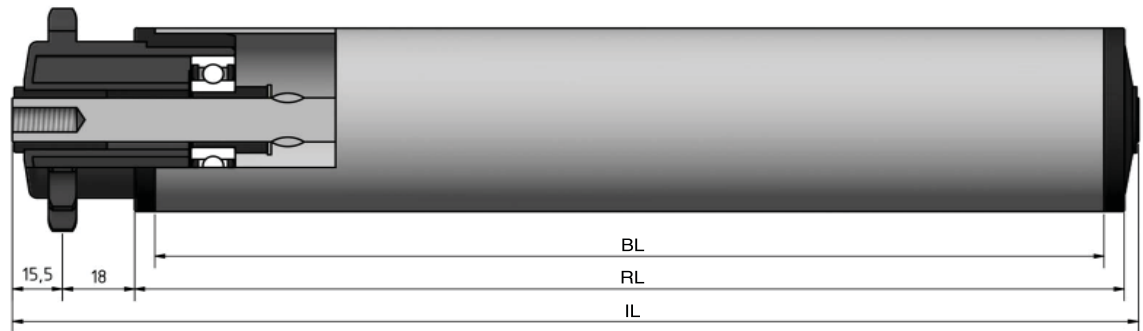


# Type 628



STAS

T +31 (0) 229 28 29 40  
www.eschgroup.nl



HTEC

T +31 (0) 416 31 66 00  
www.eschgroup.nl



CONVEYOR

T +31 (0) 416 31 56 56  
www.eschgroup.nl



		IL = RL +	CODE
	BUITENDRAAD	61	UD
	VERJONGING	46	VJ
	BINNENDRAAD	46	ID
	GLAD		GA
	SLEUTELWIJDTE	46	SW
	VEREND		VA
	AS Ø	14	

		DRAAGVERMOGEN*	RL
STALEN BUIS	50x1,5	40 kg	1500 mm
	50x2	40 kg	1500 mm
	50x3	40 kg	1500 mm
	60x2	40 kg	1849 mm
	63,5x2,9	40 kg	1849 mm
	80x2	40 kg	1849 mm
RVS BUIS	50x1,5	40 kg	1500 mm
	50x2	40 kg	1500 mm
	60,3x2	40 kg	1849 mm
	80x2	40 kg	1849 mm
KUNSTSTOF BUIS	50x2,8	40 kg	600 mm
	63x3	40 kg	850 mm
	90x7	40 kg	1100 mm

## OMSCHRIJVING

**Enkelrijige triebstock aandrijfelement 1/2"x5/6"-14 tanden**, steekcirkel=57,07 mm en groefkogellager. Rol met **fRICTIE AANDRIJVING**. De frichtiedruk is 5 tot 7% van het transportgoed gewicht.

**Tegenlagering:** Type 190, 200, 201, 202, 250 en 300.

Keuze oppervlaktebehandelingen:

Verchromen

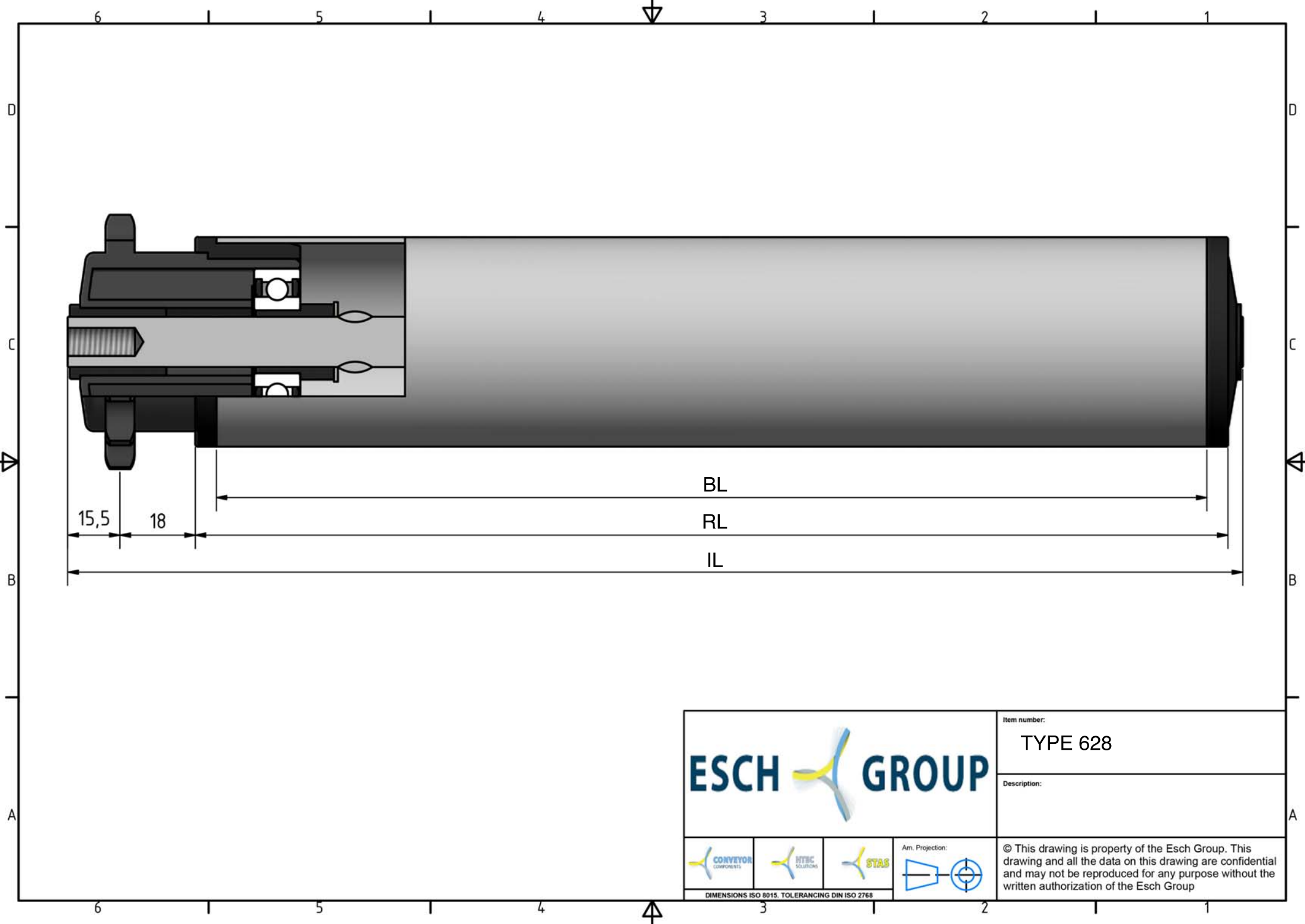
Epoxeren





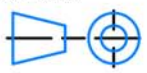
Elektrolytisch verzinken

628



\* DRAAGVERMOGEN BIJ VLAKBELASTING  
GEBASEERD OP AANGEGEVEN RL.



			Item number:
			TYPE 628
Description:			
			Ann. Projection: 
<small>DIMENSIONS ISO 8015. TOLERANCING DIN ISO 2768</small>			© This drawing is property of the Esch Group. This drawing and all the data on this drawing are confidential and may not be reproduced for any purpose without the written authorization of the Esch Group