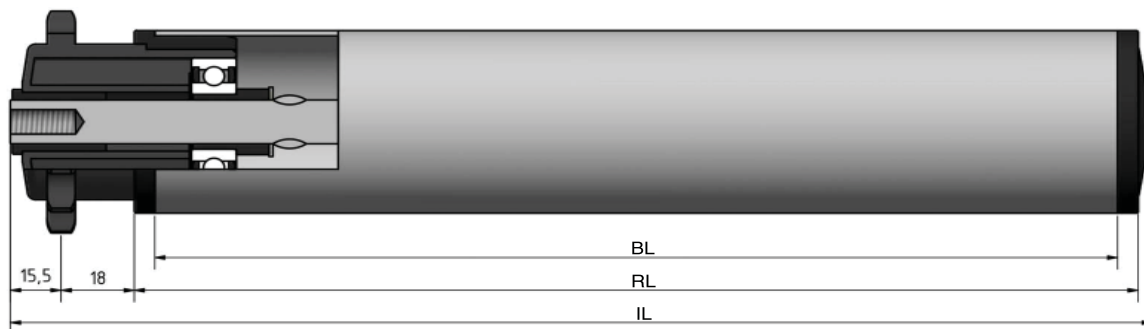


Type 629



| | | IL = RL + | | | CODE |
|---|---------------|-----------|----|----|------|
|  | BUITENDRAAD | 57 | 59 | 61 | UD |
|  | VERJONGING | 46 | 46 | 46 | VJ |
|  | BINNENDRAAD | 46 | 46 | 46 | ID |
|  | GLAD | | | | GA |
|  | SLEUTELWIJDTE | 46 | 46 | 46 | SW |
|  | VEREND | | | | VA |
| | AS Ø | 10 | 12 | 14 | |

| | | DRAAGVERMOGEN* | RL |
|----------------|------------------|----------------|--------------------|
| STALEN BUIS | 50x1,5 | 40 kg | 1500 mm |
| | 50x2 | 40 kg | 1500 mm |
| | 50x3 | 40 kg | 1500 mm |
| | 60x2 | 40 kg | 1849 mm |
| | 63,5x2,9 80x2 | 40 kg 40 kg | 1849 mm 1849 mm |
| RVS BUIS | 50x1,5 | 40 kg | 1500 mm |
| | 50x2 | 40 kg | 1500 mm |
| | 60,3x2 | 40 kg | 1849 mm |
| | 80x2 | 40 kg | 1849 mm |
| KUNSTSTOF BUIS | 50x2,8 | 40 kg | 600 mm |
| | 63,3 | 40 kg | 850 mm |
| | 90x7 | 40 kg | 1100 mm |

OMSCHRIJVING

Enkelrijige triebstock aandrijfelement 1/2"x5/16"-14 tanden, steekcirkel=57,07 mm en groefkogellager. Vaste aandrijving door **perspassing**. Dit type is alleen inzetbaar bij **continu aandrijving** en geen start stop situaties.

Tegenlagering: Type 190, 200, 201, 202, 250 en 300.

Keuze oppervlaktebehandelingen:

Verchromen

Epoxeren

Elektrolytisch verzinken

629



STAS

T +31 (0) 229 28 29 40
www.eschgroup.nl



HTEC

T +31 (0) 416 31 66 00
www.eschgroup.nl

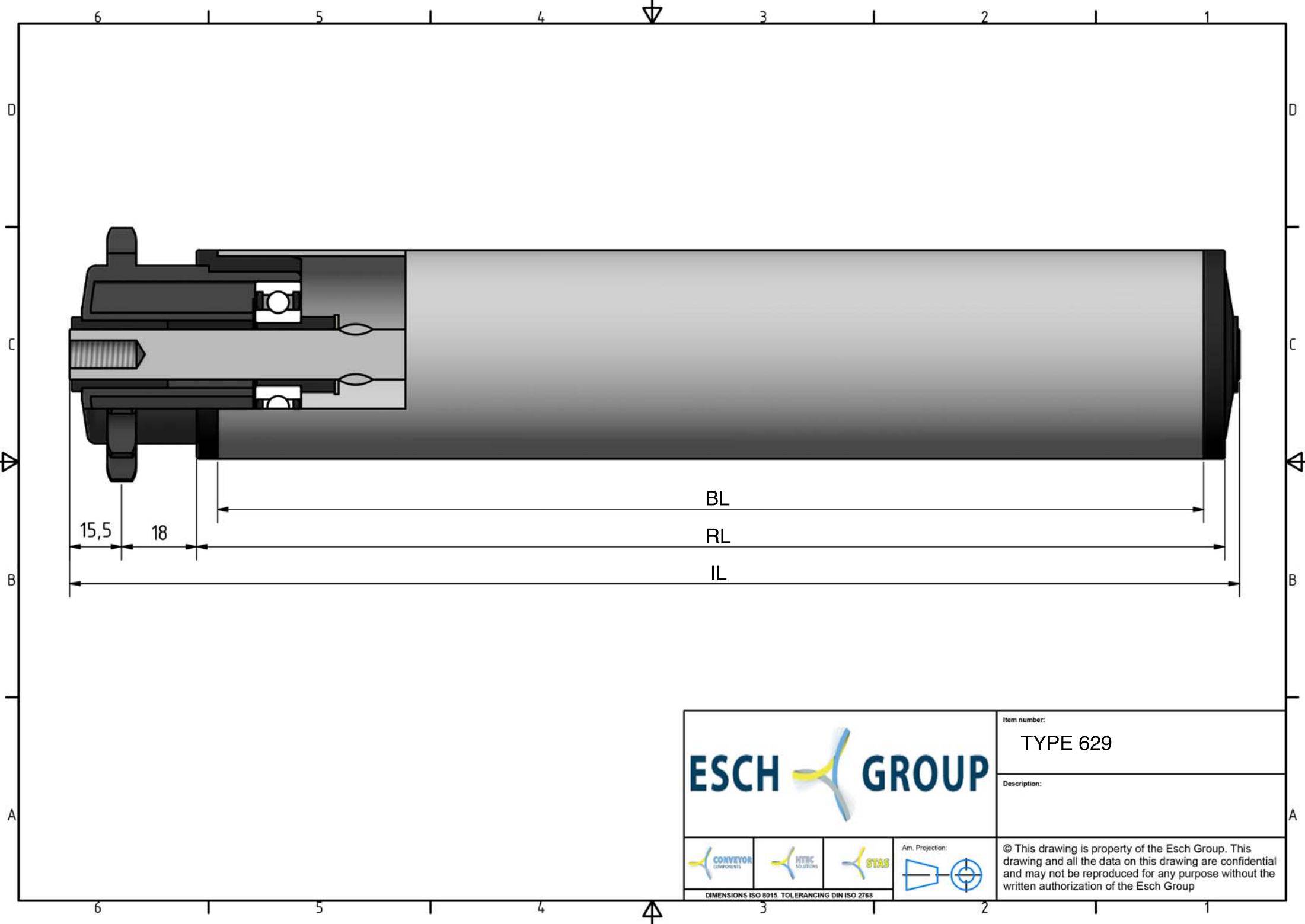






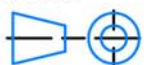
CONVEYOR

T +31 (0) 416 31 56 56
www.eschgroup.nl



* DRAAGVERMOGEN BIJ VLAKBELASTING
GEBASEERD OP AANGEGEVEN RL.



| | | | |
|---|---|---|--|
|  | | | Item number: |
| | | | TYPE 629 |
| Description: | | | |
|  |  |  | Ann. Projection:  |
| <small>DIMENSIONS ISO 8015. TOLERANCING DIN ISO 2768</small> | | | © This drawing is property of the Esch Group. This drawing and all the data on this drawing are confidential and may not be reproduced for any purpose without the written authorization of the Esch Group |