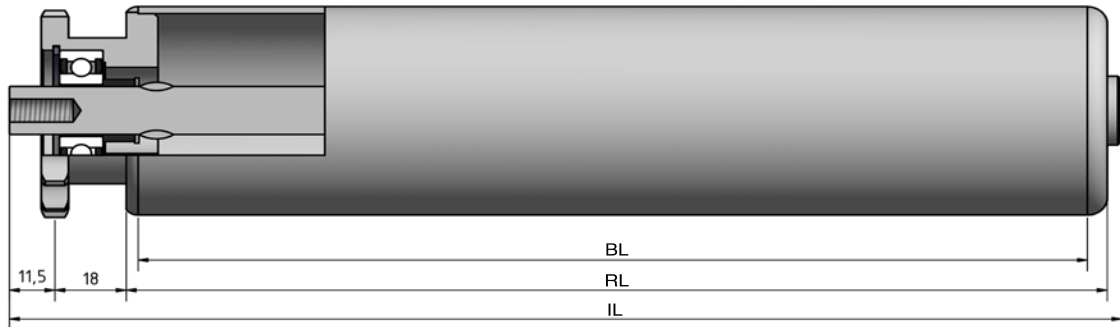


Type 632



STAS

T +31 (0) 229 28 29 40
www.eschgroup.nl



HTEC

T +31 (0) 416 31 66 00
www.eschgroup.nl



CONVEYOR

T +31 (0) 416 31 56 56
www.eschgroup.nl



		IL = RL +					CODE
	BUITENDRAAD	51	53	55	56	58	UD
	VERJONGING	40	40	40	40	40	VJ
	BINNENDRAAD	40	40	40	40	40	ID
	GLAD						GA
	SLEUTELWIJDTE	40	40	40	40	40	SW
	VEREND						VA
	AS Ø	10	12	14	15	17	

		DRAAGVERMOGEN*	RL
STALEN BUIS	50x1,5	150 kg	1500 mm
	50x2	150 kg	1500 mm
	50x3	150 kg	1500 mm
	60x2	150 kg	1849 mm
	60x3	150 kg	1849 mm
RVS BUIS	63,5x2,9	150 kg	1849 mm
	80x2	150 kg	1849 mm
	50x1,5	150 kg	1500 mm
	50x2	150 kg	1500 mm
KUNSTSTOF BUIS	60,3x2	150 kg	1500 mm
	80x2	150 kg	1849 mm

OMSCHRIJVING

Enkelrijige triebstock aandrijfelement 1/2"x5/16"-14* tanden, steekcirkel=57,07 mm en groefkogellager.
Gelaste aandrijving. Dit type is geschikt voor **continu aandrijving** en **start stop situaties**.

*Afwijkende tanden op aanvraag

Tegenlagering: Type 190, 200, 201, 202, 250, 300 en 312.

Keuze oppervlaktebehandelingen:
Verchromen
Epoxeren
Elektrolytisch verzinken

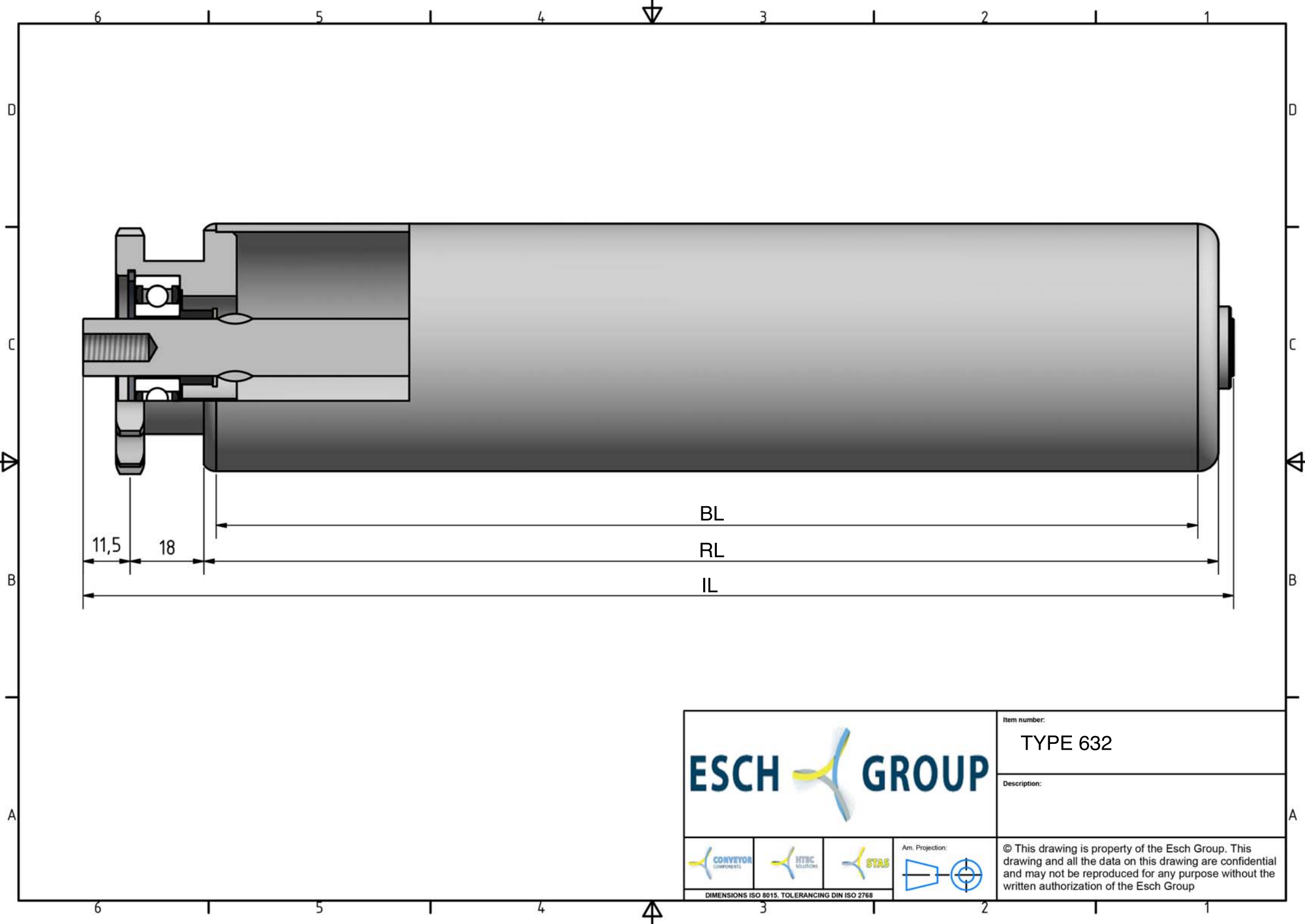
632





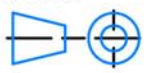


* DRAAGVERMOGEN BIJ VLAKBELASTING
GEBASEERD OP AANGEGEVEN RL.

MEMBER OF ESCH GROUP

ESCH GROUP



			Item number:
			TYPE 632
Description:			
			Ann. Projection: 
<small>DIMENSIONS ISO 8015. TOLERANCING DIN ISO 2768</small>			© This drawing is property of the Esch Group. This drawing and all the data on this drawing are confidential and may not be reproduced for any purpose without the written authorization of the Esch Group