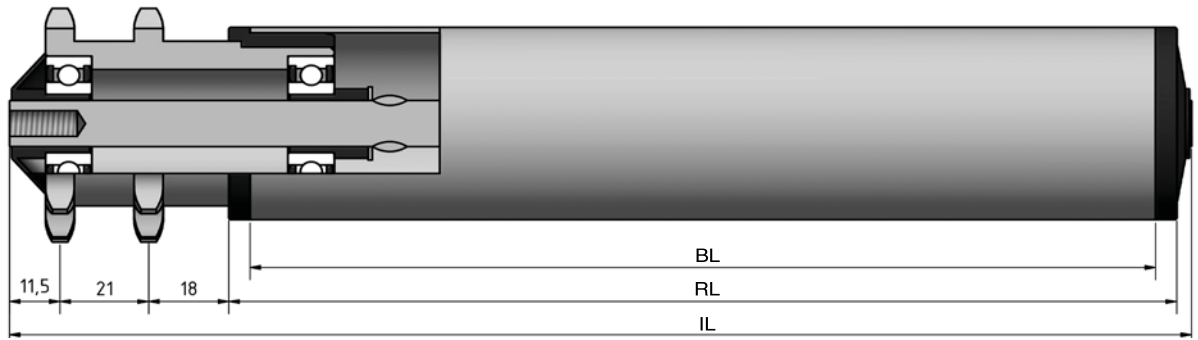


Type 642



STAS

T +31 (0) 229 28 29 40
www.eschgroup.nl



HTEC

T +31 (0) 416 31 66 00
www.eschgroup.nl



CONVEYOR

T +31 (0) 416 31 56 56
www.eschgroup.nl



		IL = RL +					CODE
	BUITENDRAAD	74	76	78	79	81	UD
	VERJONGING	63	63	63	63	63	VJ
	BINNENDRAAD	63	63	63	63	63	ID
	GLAD						GA
	SLEUTELWIJDTE	63	63	63	63	63	SW
	VEREND						VA
	AS Ø	10	12	14	15	17	

		DRAAGVERMOGEN*	RL
STALEN BUIS	50x1,5	100 kg	1500 mm
	50x2	100 kg	1500 mm
	50x3	100 kg	1500 mm
	60x2	100 kg	1849 mm
	63,5x2,9	100 kg	1849 mm
	80x2	100 kg	1849 mm
RVS BUIS	50x1,5	100 kg	1500 mm
	50x2	100 kg	1500 mm
	60,3x2	100 kg	1500 mm
	80x2	100 kg	1849 mm
KUNSTSTOF BUIS	50x2,8	100 kg	600 mm
	63x3	100 kg	850 mm
	90x7	100 kg	1100 mm

OMSCHRIJVING

Dubbelrijige aandrijfelement 1/2"x5/16"-

14* tanden, steekcirkel=57,07 mm en groefkogellager 6202 of 6003. Rol met **fRICTIE aandrijving**. De frictiedruk is 5 tot 7% van het transportgoed gewicht.

*Afwijkende tanden op aanvraag

Tegenlagering: Type 190, 200, 201, 202, 250, 300 en 312.

Keuze oppervlaktebehandelingen:

Verchromen

Epoxeren

Elektrolytisch verzinken

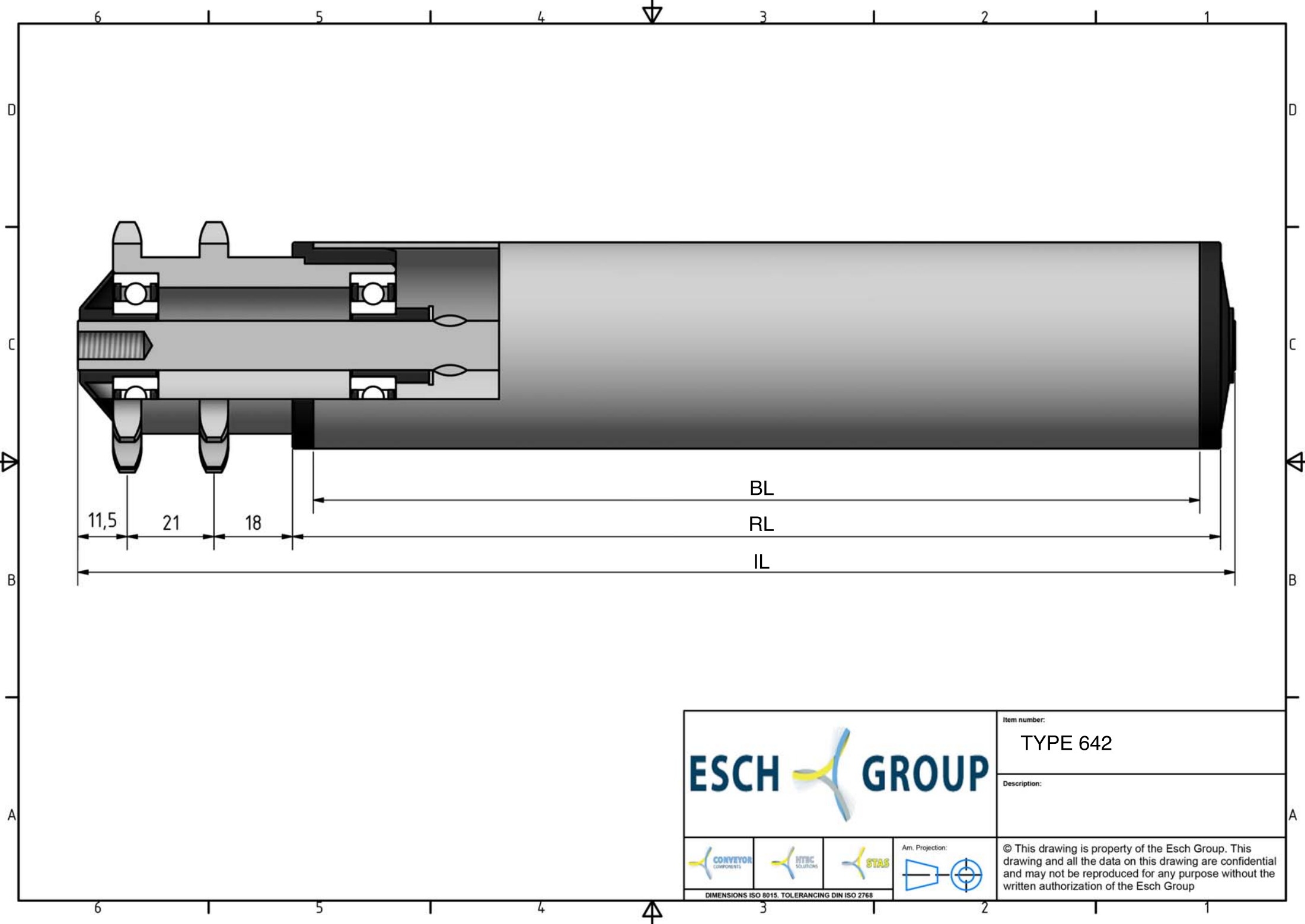
642





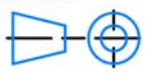


* DRAAGVERMOGEN BIJ VLAKBELASTING
GEBASEERD OP AANGEGEVEN RL.

MEMBER OF ESCH GROUP

ESCH GROUP



			Item number:
			TYPE 642
Description:			
			Ann. Projection: 
<small>DIMENSIONS ISO 8015. TOLERANCING DIN ISO 2768</small>			© This drawing is property of the Esch Group. This drawing and all the data on this drawing are confidential and may not be reproduced for any purpose without the written authorization of the Esch Group