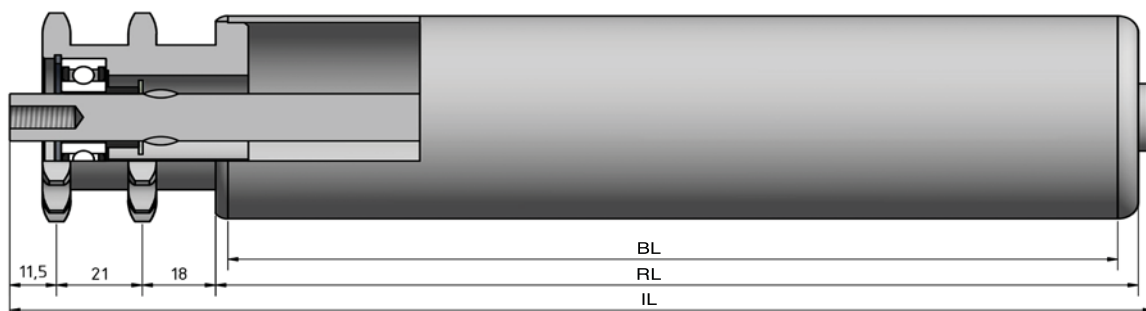


Type 645



STAS

T +31 (0) 229 28 29 40
www.eschgroup.nl



HTEC

T +31 (0) 416 31 66 00
www.eschgroup.nl



CONVEYOR

T +31 (0) 416 31 56 56
www.eschgroup.nl



		IL = RL +					CODE
	BUITENDRAAD	72	74	76	77	79	UD
	VERJONGING	61	61	61	61	61	VJ
	BINNENDRAAD	61	61	61	61	61	ID
	GLAD						GA
	SLEUTELWIJDTE	61	61	61	61	61	SW
	VEREND						VA
	AS Ø	10	12	14	15	17	

		DRAAGVERMOGEN*	RL
STALEN BUIS	50x1,5	150 kg	1500 mm
	50x2	150 kg	1500 mm
	50x3	150 kg	1500 mm
	60x2	150 kg	1849 mm
	63,5x2,9	150 kg	1849 mm
RVS BUIS	80x2	150 kg	1849 mm
	88,9x2,9	150 kg	1849 mm
	50x1,5	150 kg	1500 mm
	50x2	150 kg	1500 mm
KUNSTSTOF BUIS	60,3x2	150 kg	1500 mm
	80x2	150 kg	1849 mm
	88,9x2,9	150 kg	1849 mm

OMSCHRIJVING

Dubbelrijige aandrijfelement 1/2"x5/16"-

14* tanden, steekcirkel=57,07 mm en groefkogellager 6202 of 6003. Gelaste aandrijving. Dit type is bij **continu aandrijving** en **start stop situaties**.

*Afwijkende tanden op aanvraag

Tegenlagering: Type 190, 200, 201, 202, 250, 300 en 312.

Keuze oppervlaktebehandelingen:

Verchromen

Epoxeren

Elektrolytisch verzinken

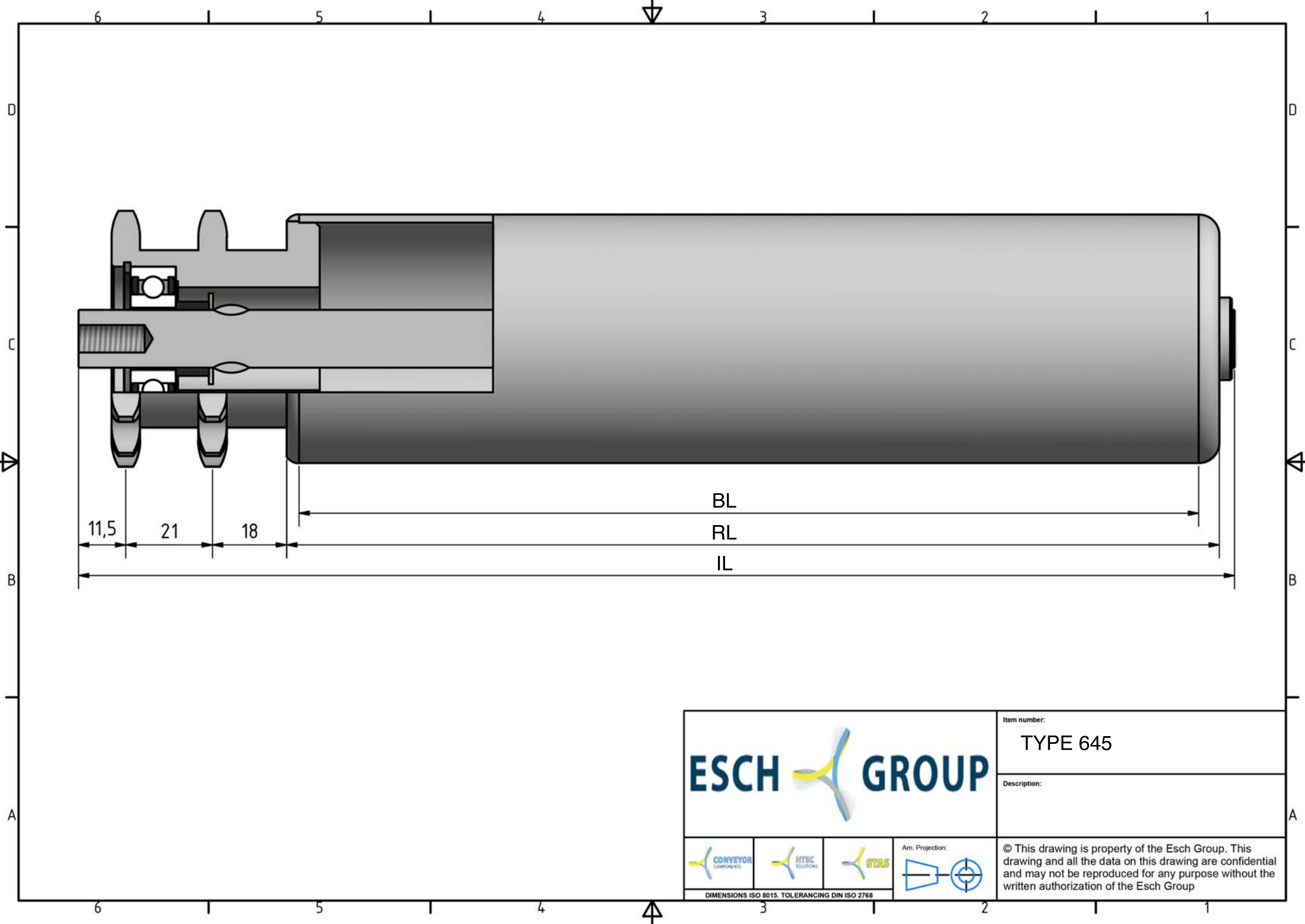
645





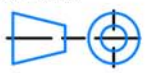


* DRAAGVERMOGEN BIJ VLAKBELASTING
GEBASEERD OP AANGEGEVEN RL.

MEMBER OF ESCH GROUP

ESCH  GROUP



				Item number:	TYPE 645
				Description:	
				© This drawing is property of the Esch Group. This drawing and all the data on this drawing are confidential and may not be reproduced for any purpose without the written authorization of the Esch Group	
<small>DIMENSIONS ISO 8015. TOLERANCING DIN ISO 2768</small>					