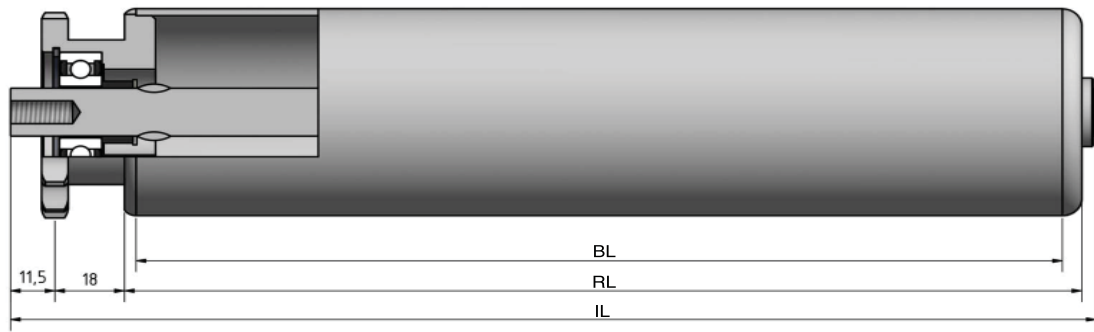


# Type 652



STAS

T +31 (0) 229 28 29 40  
www.eschgroup.nl



HTEC

T +31 (0) 416 31 66 00  
www.eschgroup.nl



CONVEYOR

T +31 (0) 416 31 56 56  
www.eschgroup.nl



		IL = RL +			CODE
	BUITENDRAAD	66	68	70	UD
	VERJONGING	55	55	55	VJ
	BINNENDRAAD	55	55	55	ID
	GLAD				GA
	SLEUTELWIJDTE	55	55	55	SW
	VEREND				VA
	AS Ø	10	12	14	

		DRAAGVERMOGEN*	RL
STALEN BUIS	50x1,5	100 kg	1500 mm
	50x2	100 kg	1500 mm
	50x3	100 kg	1500 mm
	60x2	100 kg	1849 mm
	63,5x2,9	100 kg	1849 mm
	80x2	100 kg	1849 mm
RVS BUIS	50x1,5	100 kg	1500 mm
	50x2	100 kg	1500 mm
	60,3x2	100 kg	1500 mm
	80x2	100 kg	1849 mm
KUNSTSTOF BUIS	50x2,8	100 kg	600 mm
	63,3x2,9	100 kg	850 mm
	90x7	100 kg	1100 mm

## OMSCHRIJVING

**Enkelrijige triebstock aandrijfelement, 5/8"x3/8" - 12\* tanden** steekcirkel=61,34 mm en groefkogellager. Rol met **fRICTIE AANDRIJVING**. De frichtiedruk is 5 tot 7% van het transportgoed gewicht.

\*Afwijkende tanden op aanvraag

**Tegenlagering:** Type 190, 200, 201, 202, 250 en 300.

Keuze oppervlaktebehandelingen:

Verchromen

Epoxeren

Elektrolytisch verzinken

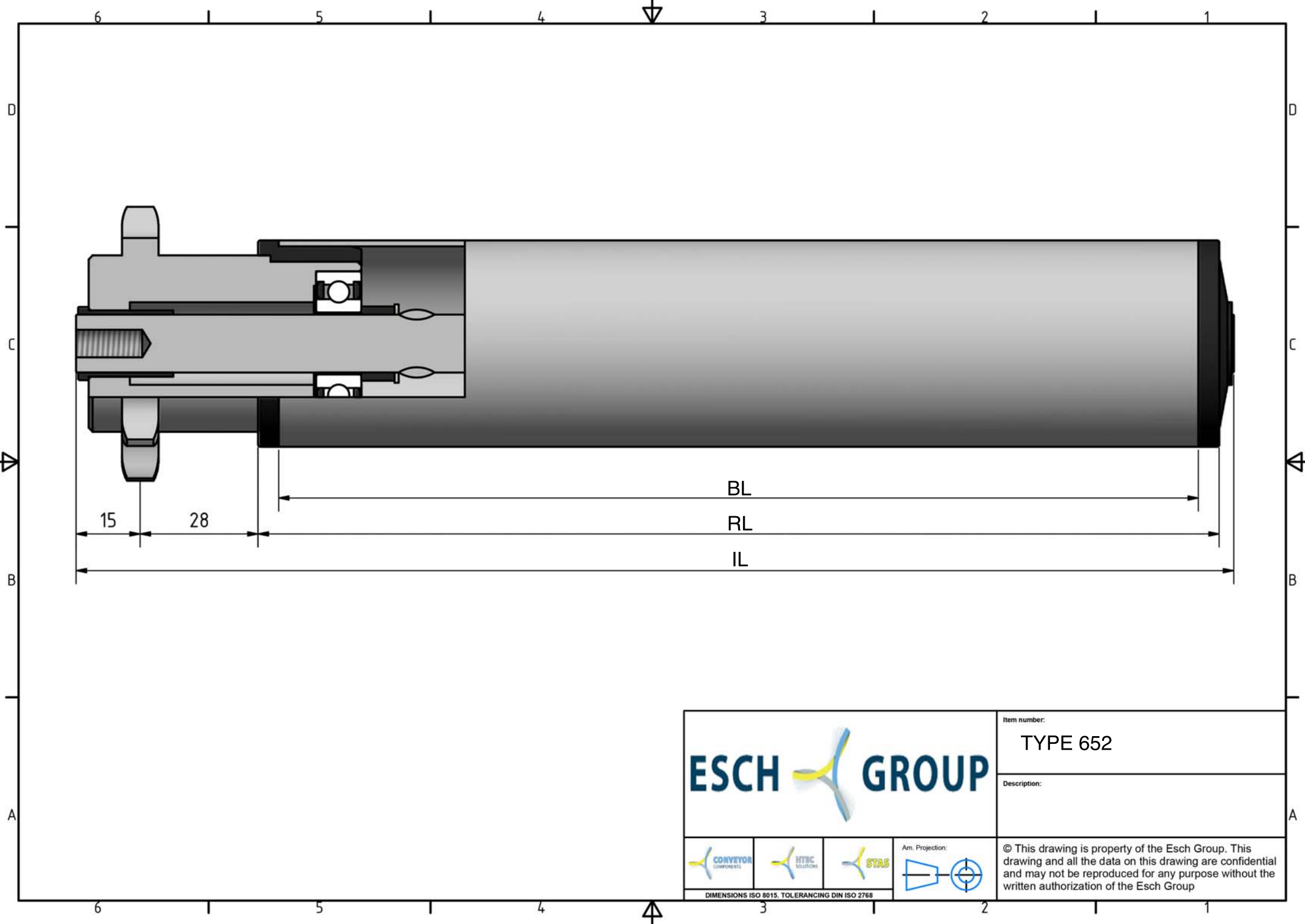
652





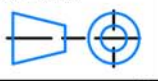


\* DRAAGVERMOGEN BIJ VLAKBELASTING  
GEBASEERD OP AANGEGEVEN RL.

MEMBER OF ESCH GROUP

ESCH GROUP



			Item number:
			TYPE 652
Description:			
			Ann. Projection: 
<small>DIMENSIONS ISO 8015. TOLERANCING DIN ISO 2768</small>			© This drawing is property of the Esch Group. This drawing and all the data on this drawing are confidential and may not be reproduced for any purpose without the written authorization of the Esch Group