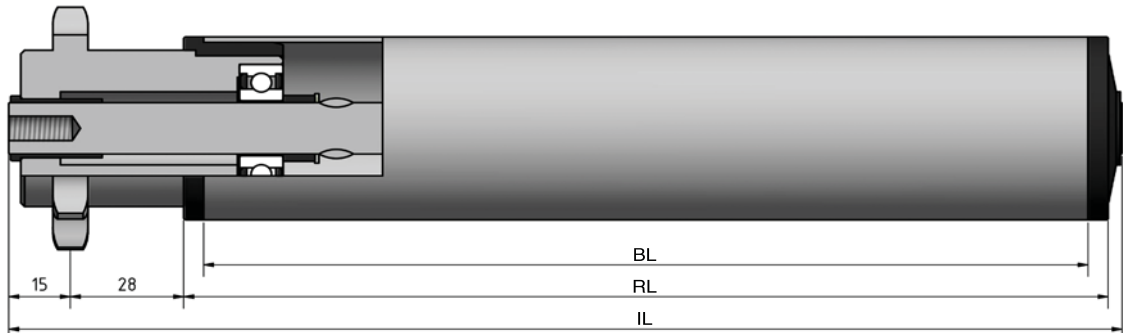


# Type 653



STAS

T +31 (0) 229 28 29 40  
www.eschgroup.nl



HTEC

T +31 (0) 416 31 66 00  
www.eschgroup.nl



CONVEYOR

T +31 (0) 416 31 56 56  
www.eschgroup.nl



|  |               | IL = RL + |    |    | CODE |
|--|---------------|-----------|----|----|------|
|  | BUITENDRAAD   | 66        | 68 | 70 | UD   |
|  | VERJONGING    | 55        | 55 | 55 | VJ   |
|  | BINNENDRAAD   | 55        | 55 | 55 | ID   |
|  | GLAD          |           |    |    | GA   |
|  | SLEUTELWIJDTE | 55        | 55 | 55 | SW   |
|  | VEREND        |           |    |    | VA   |
|  | AS Ø          | 10        | 12 | 14 |      |

|                |          | DRAAGVERMOGEN* | RL      |
|----------------|----------|----------------|---------|
| STALEN BUIS    | 50x1,5   | 100 kg         | 1500 mm |
|                | 50x2     | 100 kg         | 1500 mm |
|                | 50x3     | 100 kg         | 1500 mm |
|                | 60x2     | 100 kg         | 1849 mm |
|                | 63,5x2,9 | 100 kg         | 1849 mm |
|                | 80x2     | 100 kg         | 1849 mm |
| RVS BUIS       | 50x1,5   | 100 kg         | 1500 mm |
|                | 50x2     | 100 kg         | 1500 mm |
|                | 60,3x2   | 100 kg         | 1500 mm |
|                | 80x2     | 100 kg         | 1849 mm |
| KUNSTSTOF BUIS | 50x2,8   | 100 kg         | 600 mm  |
|                | 63x3     | 100 kg         | 850 mm  |
|                | 90x7     | 100 kg         | 1100 mm |

## OMSCHRIJVING

**Enkelrijige triebstock aandrijfelement, 5/8"x3/8"-12\* tanden** steekcirkel=61,34 mm en groefkogellager. Vaste aandrijving door **perspassing**. Dit type is alleen inzetbaar bij **continu aandrijving** en geen start stop situaties.

\*Afwijkende tanden op aanvraag

**Tegenlagering:** Type 190, 200, 201, 202, 250 en 300.

Keuze oppervlaktebehandelingen:

Verchromen

Epoxeren

Elektrolytisch verzinken

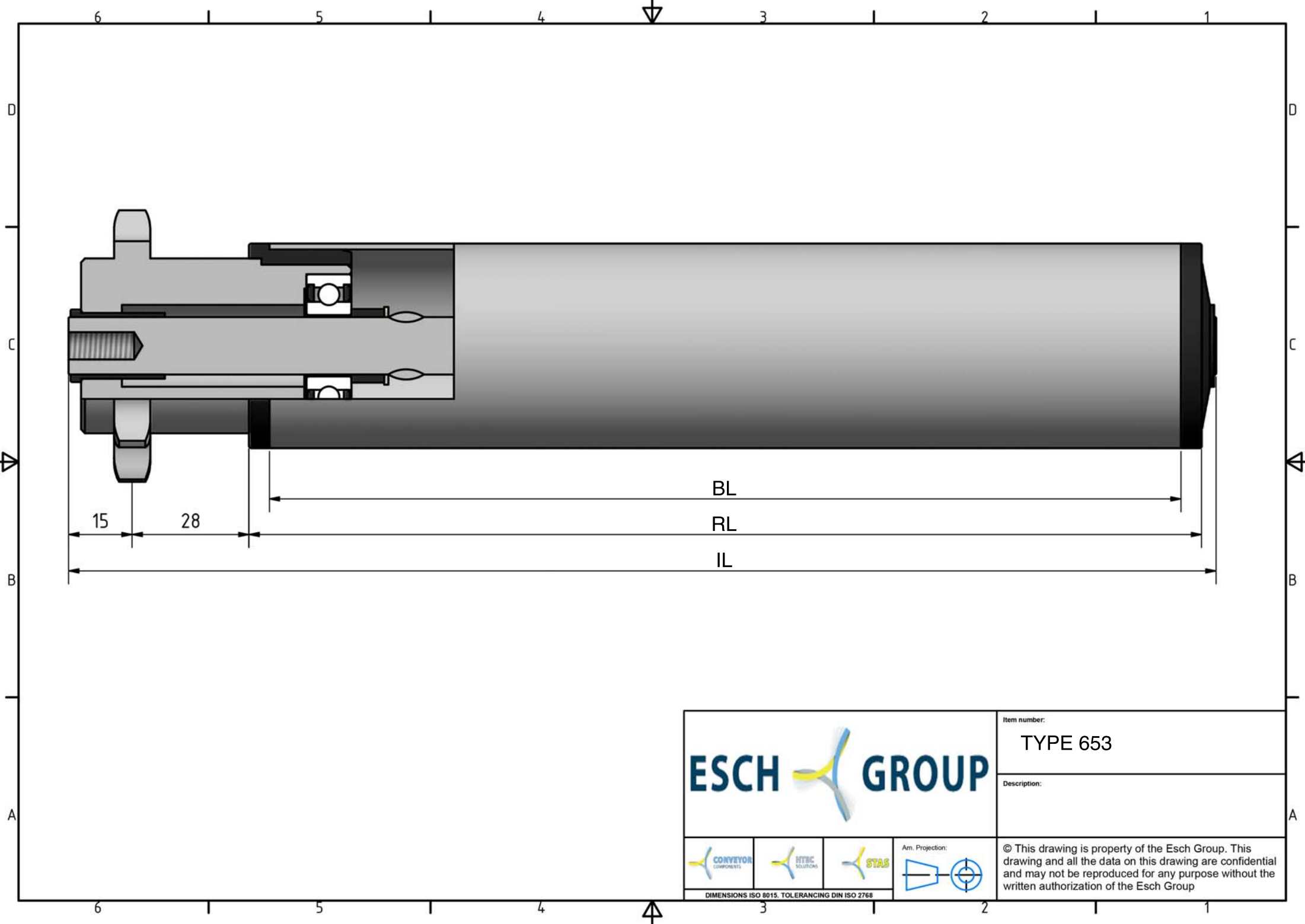
653





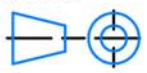


\* DRAAGVERMOGEN BIJ VLAKBELASTING  
GEBASEERD OP AANGEGEVEN RL.

MEMBER OF ESCH GROUP

ESCH GROUP



|   |   |   |   |  |   |
|---|---|---|---|--|---|
|  |   |   |   | Item number:<br>TYPE 653   |   |
|   |   |   |   | Description:   |   |
|  |  |  |  | © This drawing is property of the Esch Group. This drawing and all the data on this drawing are confidential and may not be reproduced for any purpose without the written authorization of the Esch Group |   |
| <small>DIMENSIONS ISO 8015. TOLERANCING DIN ISO 2768</small>                          |   |   |   | 6  | 1 |