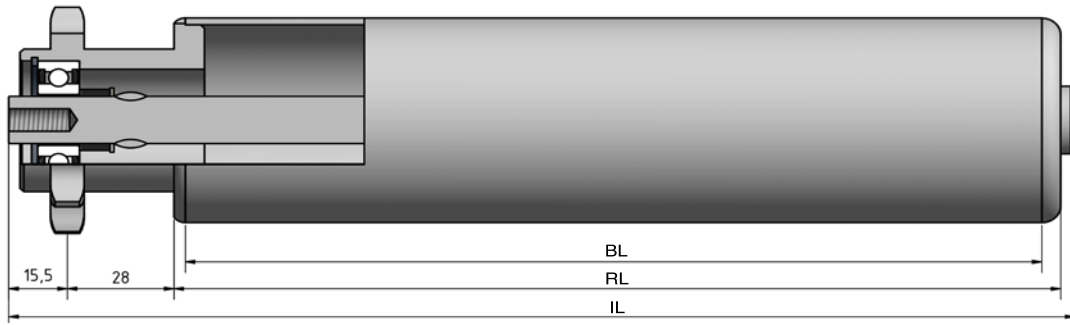


Type 654



STAS
T +31 (0) 229 28 29 40
www.eschgroup.nl



HTEC
T +31 (0) 416 31 66 00
www.eschgroup.nl



CONVEYOR
T +31 (0) 416 31 56 56
www.eschgroup.nl



		IL = RL +					CODE
	BUITENDRAAD	65	67	69	71	73	UD
	VERJONGING	54	54	54	54	54	VJ
	BINNENDRAAD	54	54	54	54	54	ID
	GLAD						GA
	SLEUTELWIJDTE	54	54	54	54	54	SW
	VEREND						VA
	AS Ø	10	12	14	15	17	

		DRAAGVERMOGEN*	RL
STALEN BUIS	50x1,5	150 kg	1500 mm
	50x2	150 kg	1500 mm
	50x3	150 kg	1500 mm
	60x2	150 kg	1849 mm
	63,5x2,9	150 kg	1849 mm
	80x2	150 kg	1849 mm
RVS BUIS	88,9x2,9	150 kg	1849 mm
	50x1,5	150 kg	1500 mm
	50x2	150 kg	1500 mm
	60,3x2	150 kg	1500 mm
KUNSTSTOF BUIS	80x2	150 kg	1849 mm
	88,9x2,9	150kg	1849 mm

OMSCHRIJVING

Enkelrijige triebstock aandrijfelement, 5/8"x3/8"-12* tanden steekcirkel=61,34 mm en groefkogellager 6202 en 6003. **Gelaste** aandrijving. Dit type is bij **continu aandrijving** en **start stop situaties**.

*Afwijkende tanden op aanvraag

Tegenlagering: Type 190, 200, 201, 202, 250, 300 en 312.

Keuze oppervlaktebehandelingen:

Verchromen

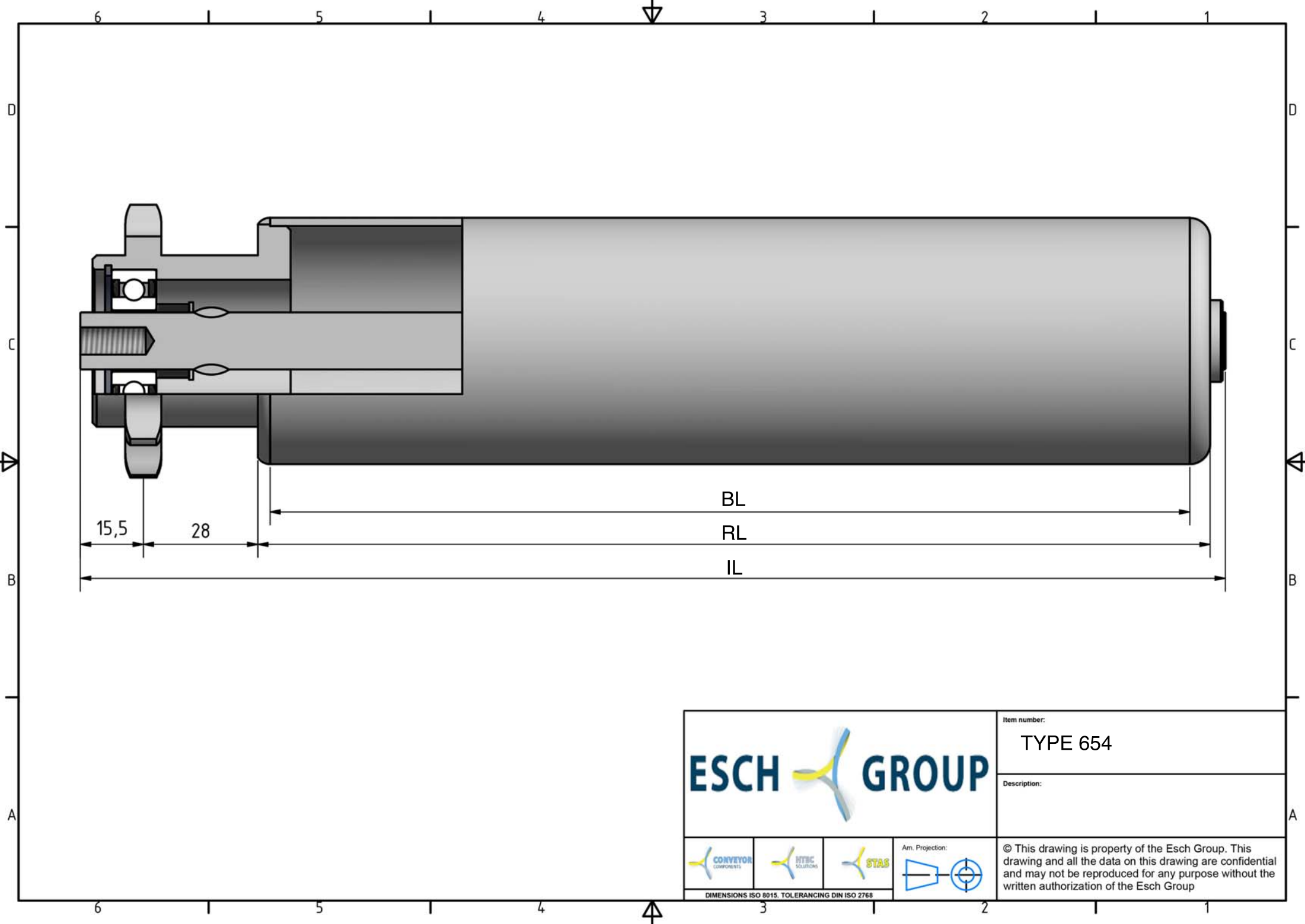
Epoxeren





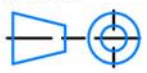
Elektrolytisch verzinken

654



* DRAAGVERMOGEN BIJ VLAKBELASTING
GEBASEERD OP AANGEGEVEN RL.



			Item number:
			TYPE 654
Description:			
			Ann. Projection: 
<small>DIMENSIONS ISO 8015. TOLERANCING DIN ISO 2768</small>			© This drawing is property of the Esch Group. This drawing and all the data on this drawing are confidential and may not be reproduced for any purpose without the written authorization of the Esch Group