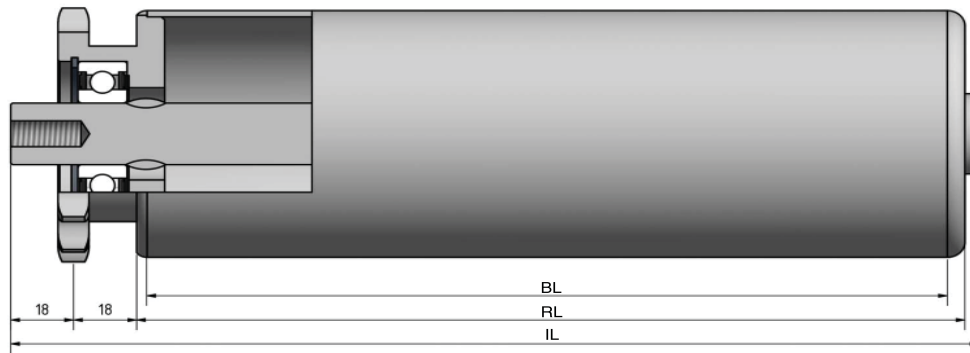


Type 656



STAS

T +31 (0) 229 28 29 40
www.eschgroup.nl



HTEC

T +31 (0) 416 31 66 00
www.eschgroup.nl



CONVEYOR

T +31 (0) 416 31 56 56
www.eschgroup.nl



		IL = RL +		CODE
	BUITENDRAAD	70	75	UD
	VERJONGING	49	49	VJ
	BINNENDRAAD	49	49	ID
	GLAD			GA
	SLEUTELWIJDTE	49	49	SW
	VEREND			VA
	AS Ø	20	25	

		DRAAGVERMOGEN*	RL
STALEN BUIS	80x2	250 kg	2199 mm
	88,9x2,9	340 kg	2199 mm
	108x3,25	400 kg	2199 mm
RVS BUIS	80x2	250 kg	2199 mm
	88,9x2,9	340 kg	2199 mm
	108x3,25	400 kg	2500 mm
KUNSTSTOF BUIS			

OMSCHRIJVING

Enkelrijige triebstockaandrijfelement, 5/8"x3/8"-15* tanden, steekcirkel=76,36 mm en groefkogellager 6004, 6204 of 6005. Gelaste aandrijving. Dit type is bij continu aandrijving en start stop situaties.

*Afwijkende tanden op aanvraag

Tegenlagering: Typen 260, 306, 450 en 451.

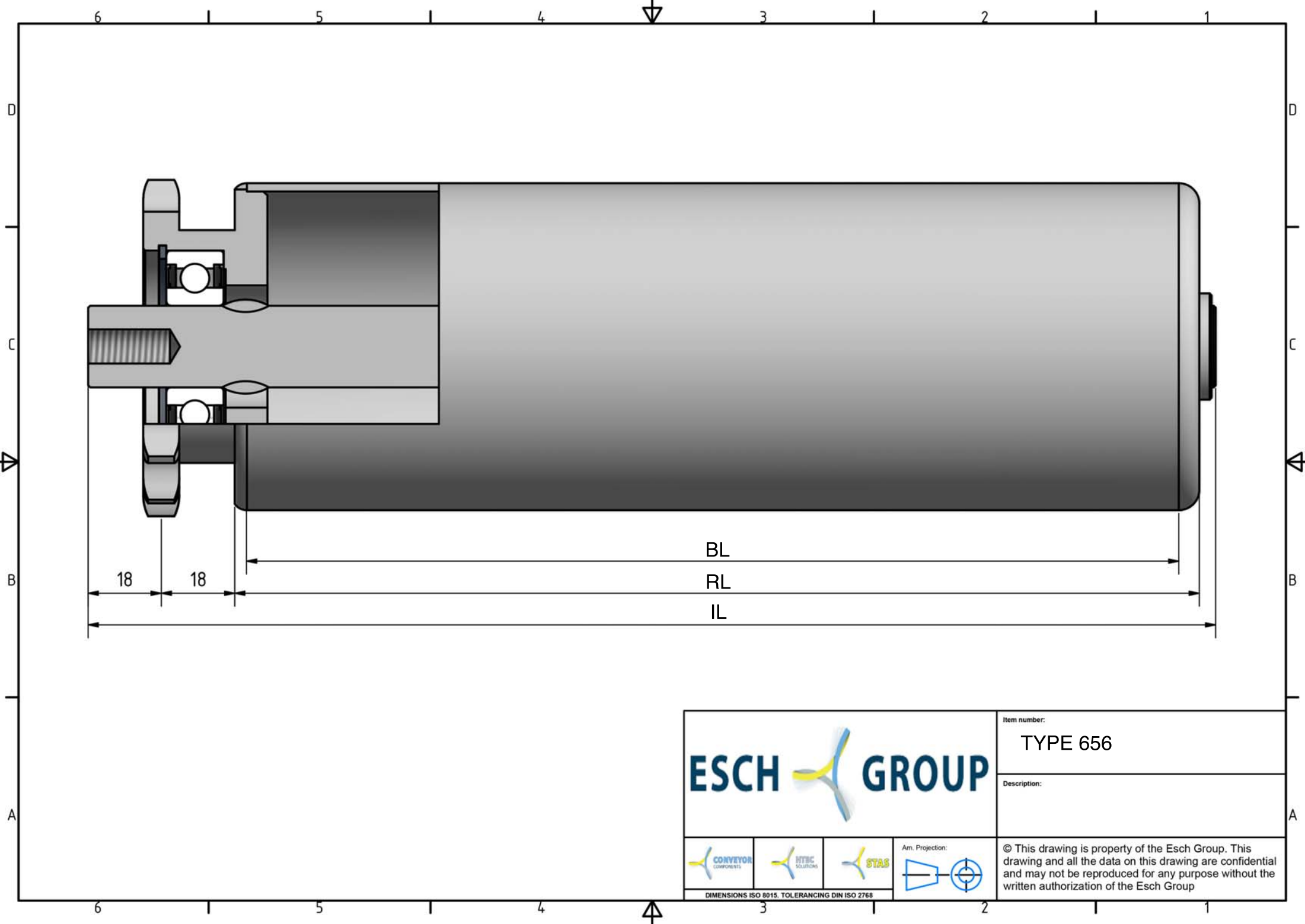
Keuze oppervlaktebehandelingen:





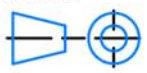
- Verchromen
- Epoxeren
- Elektrolytisch verzinken

656



* DRAAGVERMOGEN BIJ VLAKBELASTING
GEBASEERD OP AANGEGEVEN RL.



				Item number:	TYPE 656
				Description:	
				© This drawing is property of the Esch Group. This drawing and all the data on this drawing are confidential and may not be reproduced for any purpose without the written authorization of the Esch Group	
<small>DIMENSIONS ISO 8015. TOLERANCING DIN ISO 2768</small>					