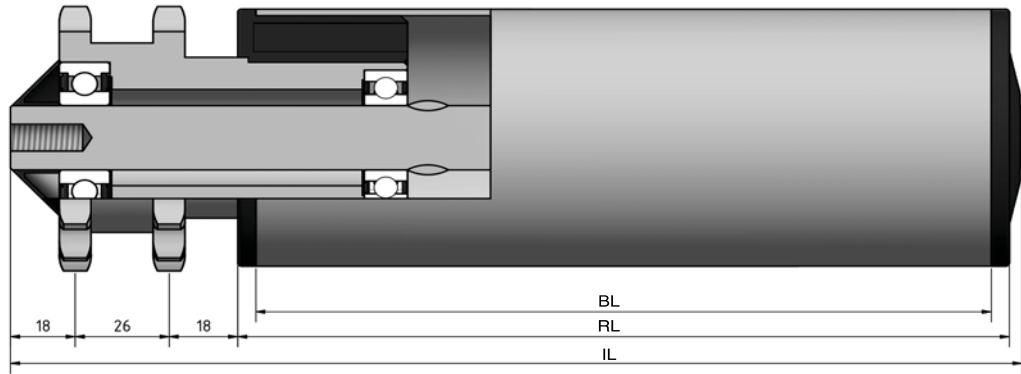


# Type 660



STAS

T +31 (0) 229 28 29 40  
www.eschgroup.nl



HTEC


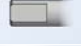

T +31 (0) 416 31 66 00  
www.eschgroup.nl



CONVEYOR

T +31 (0) 416 31 56 56  
www.eschgroup.nl



		IL = RL +	CODE
	BUITENDRAAD	100	UD
	VERJONGING	79	VJ
	BINNENDRAAD	79	ID
	GLAD		GA
	SLEUTELWIJDTE	79	SW
	VEREND		VA
	AS Ø	20	

		DRAAGVERMOGEN*	RL
STALEN BUIS	80x2	200 kg	2199 mm
	88,9x2,9	200 kg	2199 mm
	108x3,25	200 kg	2500 mm
RVS BUIS	80x2	150 kg	2199 mm
	88,9x2,9	150 kg	2199 mm
	108x3,25	150 kg	2500 mm
KUNSTSTOF BUIS			

## OMSCHRIJVING

**Dubbelrijige aandrijfelement 5/8"x3/8"- 15\* tanden,**  
steekcirkel=76,36 mm, groefkogellager 6004 en 6204,  
afstandbus aan ketting wiel zijde.

Rol met **frictie aandrijving**. De frictiedruk is 5 tot 7%  
van het transportgoed gewicht.

\*Afwijkende tanden op aanvraag

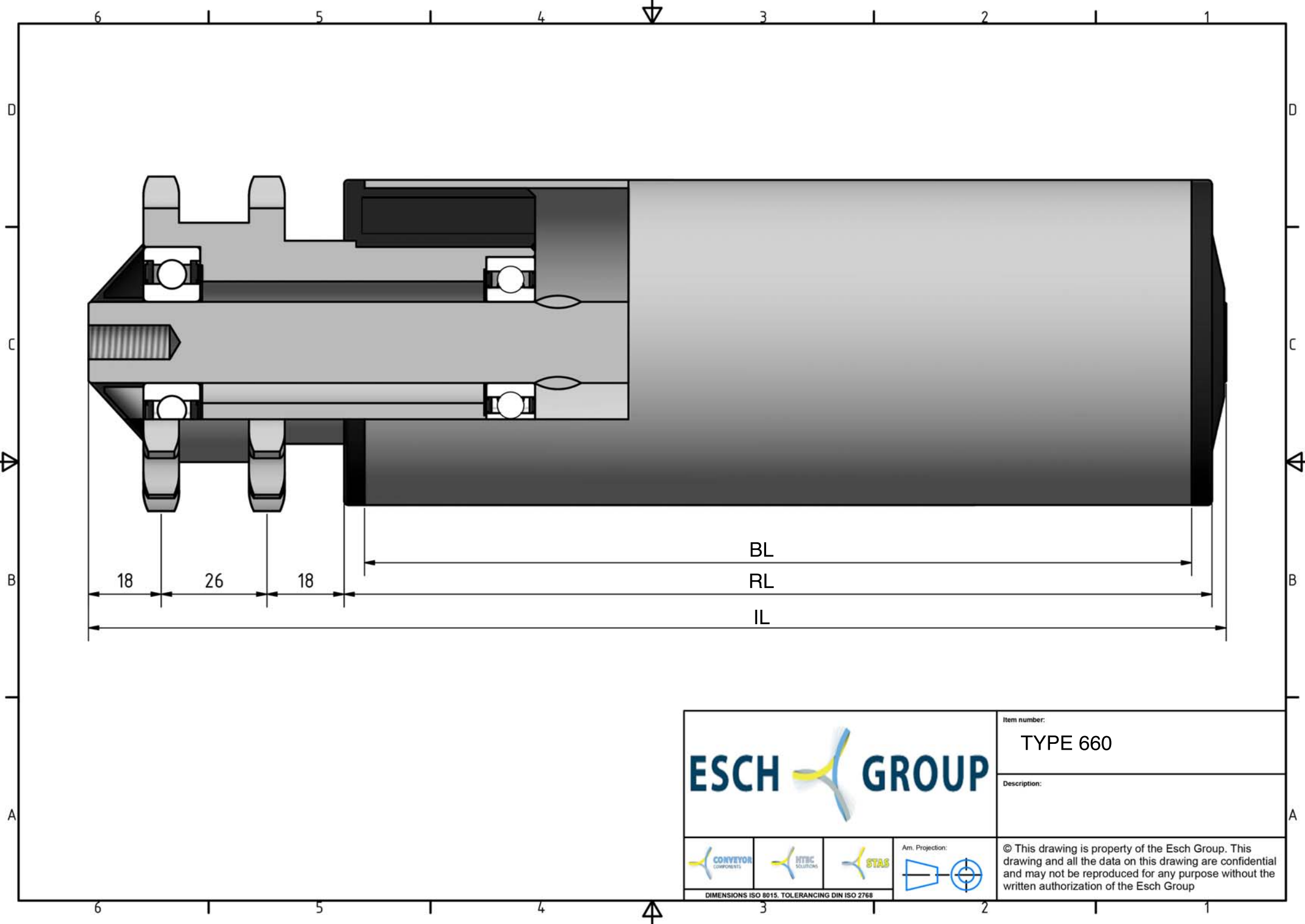
**Tegenlagering:** Type 312.





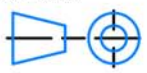
Keuze oppervlaktebehandelingen:  
Verchromen  
Epoxyeren  
Elektrolytisch verzinken

660



\* DRAAGVERMOGEN BIJ VLAKBELASTING  
GEBASEERD OP AANGEGEVEN RL.



				Item number:	TYPE 660
				Description:	
				© This drawing is property of the Esch Group. This drawing and all the data on this drawing are confidential and may not be reproduced for any purpose without the written authorization of the Esch Group	
<small>DIMENSIONS ISO 8015. TOLERANCING DIN ISO 2768</small>					