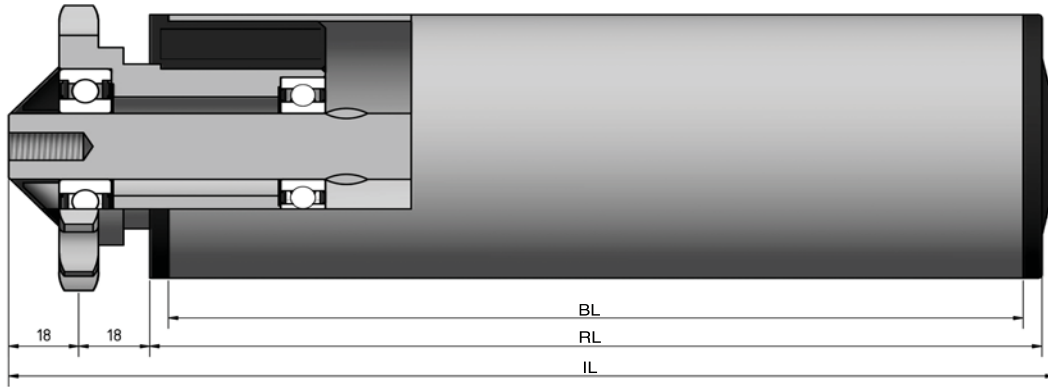


# Type 670



**STAS**  
T +31 (0) 229 28 29 40  
www.eschgroup.nl



**HTEC**  
T +31 (0) 416 31 66 00  
www.eschgroup.nl



**CONVEYOR**  
T +31 (0) 416 31 56 56  
www.eschgroup.nl



		IL = RL +		CODE
	<b>BUITENDRAAD</b>	74	78	UD
	<b>VERJONGING</b>	53	52	VJ
	<b>BINNENDRAAD</b>	53	53	ID
	<b>GLAD</b>			GA
	<b>SLEUTELWIJDTE</b>	53	53	SW
	<b>VEREND</b>			VA
	<b>AS Ø</b>	20	25	

		DRAAGVERMOGEN*	RL
<b>STALEN BUIS</b>	80x2	200 kg	2199 mm
	88,9x2,9	200 kg	2199 mm
	108x3,25	200 kg	2500 mm
<b>RVS BUIS</b>	80x2	150 kg	2199 mm
	88,9x2,9	150 kg	2199 mm
	108x3,25	150 kg	2500 mm
<b>KUNSTSTOF BUIS</b>			

## OMSCHRIJVING

**Enkelrijige triebstock aandrijfelement, 3/4"x7/16"-13\* tanden, steekcirkel=76,36 mm, groefkogellager 6004 en 6204, nylon afstandsbus aan kettingwiel zijde.**  
Rol met **fRICTIE AANDRIJVING**. De frichtiedruk is 5 tot 7% van het transportgoed gewicht.

\*Afwijkende tanden op aanvraag

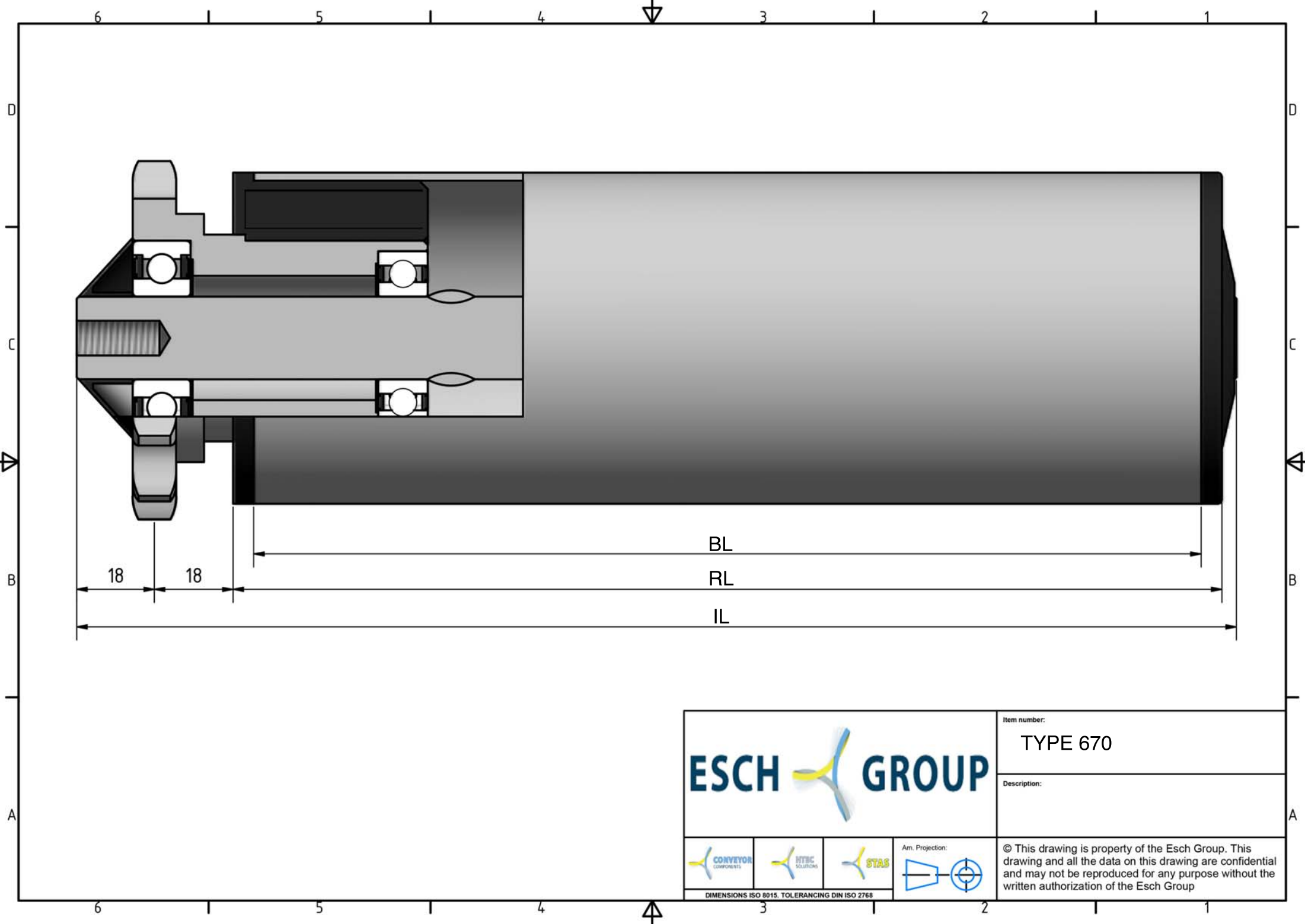
**Tegenlagering:** Type 312





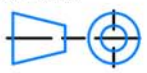
Keuze oppervlaktebehandelingen:  
Verchromen  
Epoxeren  
Elektrolytisch verzinken

670



\* DRAAGVERMOGEN BIJ VLAKBELASTING  
GEBASEERD OP AANGEGEVEN RL.



			Item number:
			TYPE 670
Description:			
			Ann. Projection: 
<small>DIMENSIONS ISO 8015. TOLERANCING DIN ISO 2768</small>			© This drawing is property of the Esch Group. This drawing and all the data on this drawing are confidential and may not be reproduced for any purpose without the written authorization of the Esch Group