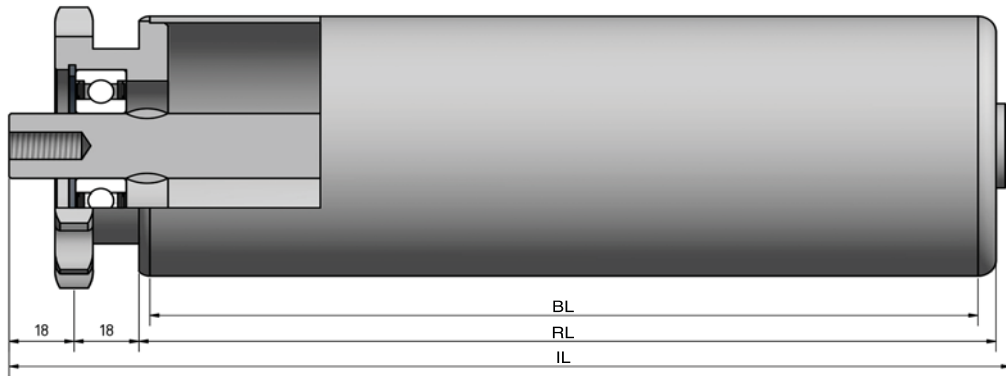


Type 671



STAS

T +31 (0) 229 28 29 40
www.eschgroup.nl



HTEC

T +31 (0) 416 31 66 00
www.eschgroup.nl



CONVEYOR

T +31 (0) 416 31 56 56
www.eschgroup.nl



| | | IL = RL + | | | | CODE |
|--|---------------|-----------|----|--|--|------|
| | BUITENDRAAD | 70 | 75 | | | UD |
| | VERJONGING | 49 | 49 | | | VJ |
| | BINNENDRAAD | 49 | 49 | | | ID |
| | GLAD | | | | | GA |
| | SLEUTELWIJDTE | 49 | 49 | | | SW |
| | VEREND | | | | | VA |
| | AS Ø | 20 | 25 | | | |

| | | DRAAGVERMOGEN* | RL |
|----------------|----------|----------------|---------|
| STALEN BUIS | 80x2 | 200 kg | 2199 mm |
| | 80x3 | 200 kg | 2199 mm |
| | 88,9x2,9 | 340 kg | 2199 mm |
| | 108x3,25 | 400 kg | 2500 mm |
| | 133x3,6 | 400 kg | 2500 mm |
| | | | |
| | | | |
| RVS BUIS | 80x2 | 250 kg | 2199 mm |
| | 88,9x2,9 | 340 kg | 2199 mm |
| | 108x3 | 400 kg | 2500 mm |
| | 133x3,6 | 400 kg | 2500 mm |
| | | | |
| | | | |
| KUNSTSTOF BUIS | | | |
| | | | |
| | | | |

OMSCHRIJVING

Enkelrijige triebstock aandrijfelement 3/4"x7/16"-13* tanden, steekcirkel=79,59 mm, groefkogellager 6204 of 6005. **Gelaste** aandrijving. Dit type is bij **continu aandrijving** en **start stop situaties**.

*Afwijkende tanden op aanvraag

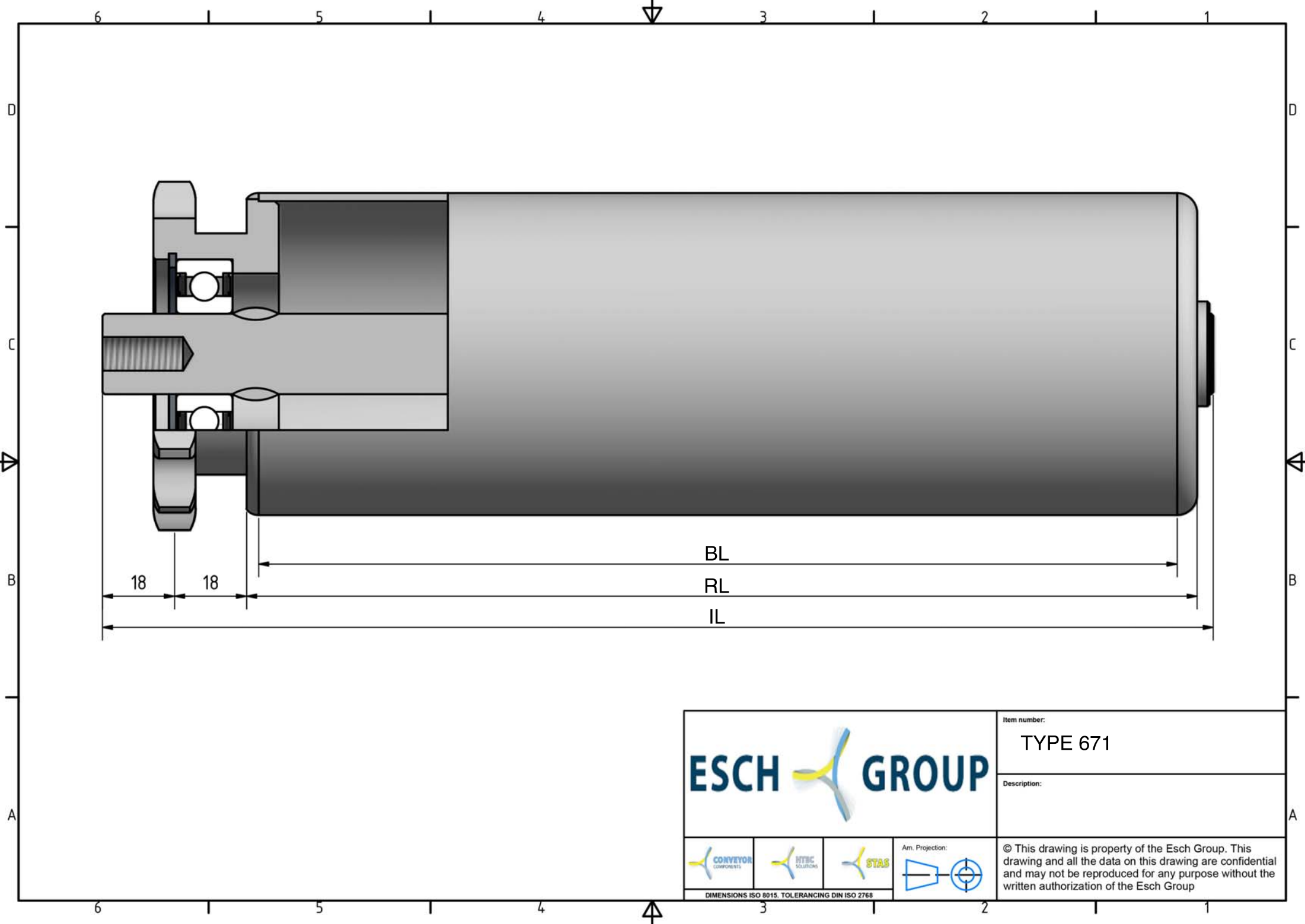
Tegenlagering: Type 260 en 450.





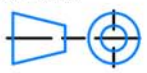
Keuze oppervlaktebehandelingen:
Verchromen
Epoxeren
Elektrolytisch verzinken

671



* DRAAGVERMOGEN BIJ VLAKBELASTING
GEBASEERD OP AANGEGEVEN RL.



| | | | | | |
|---|---|---|---|--|----------|
|  | | | | Item number: | TYPE 671 |
| | | | | Description: | |
|  |  |  |  | © This drawing is property of the Esch Group. This drawing and all the data on this drawing are confidential and may not be reproduced for any purpose without the written authorization of the Esch Group | |
| <small>DIMENSIONS ISO 8015. TOLERANCING DIN ISO 2768</small> | | | | | |