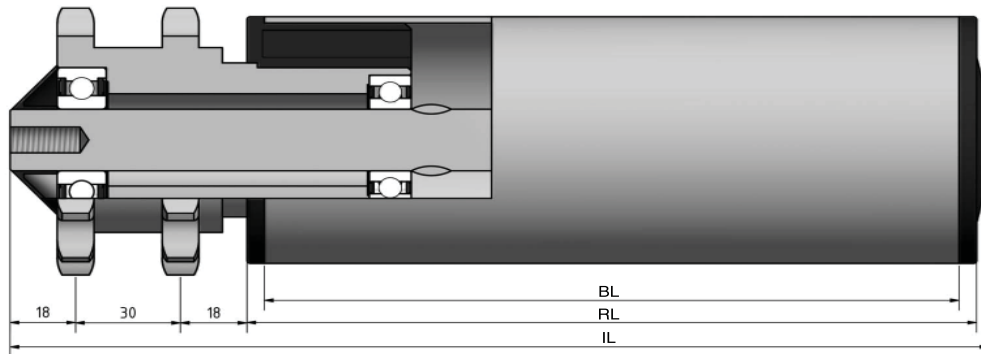
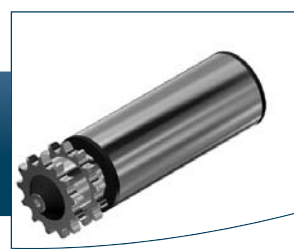


# Type 680



STAS

T +31 (0) 229 28 29 40  
www.eschgroup.nl



HTEC

T +31 (0) 416 31 66 00  
www.eschgroup.nl



CONVEYOR

T +31 (0) 416 31 56 56  
www.eschgroup.nl



|  |               | IL = RL + |     | CODE |
|--|---------------|-----------|-----|------|
|  | BUITENDRAAD   | 95        | 100 | UD   |
|  | VERJONGING    | 74        | 74  | VJ   |
|  | BINNENDRAAD   | 74        | 74  | ID   |
|  | GLAD          |           |     | GA   |
|  | SLEUTELWIJDTE | 74        | 74  | SW   |
|  | VEREND        |           |     | VA   |
|  | AS Ø          | 20        | 25  |      |

|                |          | DRAAGVERMOGEN* | RL      |
|----------------|----------|----------------|---------|
| STALEN BUIS    | 80x2     | 200 kg         | 2199 mm |
|                | 88,9x2,9 | 200 kg         | 2199 mm |
|                | 108x3,25 | 200 kg         | 2500 mm |
| RVS BUIS       | 80x2     | 150 kg         | 2199 mm |
|                | 88,9x2,9 | 150 kg         | 2199 mm |
|                | 108x3    | 150 kg         | 2500 mm |
| KUNSTSTOF BUIS |          |                |         |
|                |          |                |         |
|                |          |                |         |

## OMSCHRIJVING

### Dubbelrijige aandrijfelement 3/4"x7/16" -

**13\* tanden**, steekcirkel=79,59 mm en groefkogellager 6004 en 6204, afstandbus aan kettingwiel zijde.

Rol met **frictie aandrijving**. De frictiedruk is 5 tot 7% van het transportgoed gewicht.

\*Afwijkende tanden op aanvraag

**Tegenlagering** : Type 312.

Keuze oppervlaktebehandelingen:

Verchromen

Epoxeren

Elektrolytisch verzinken

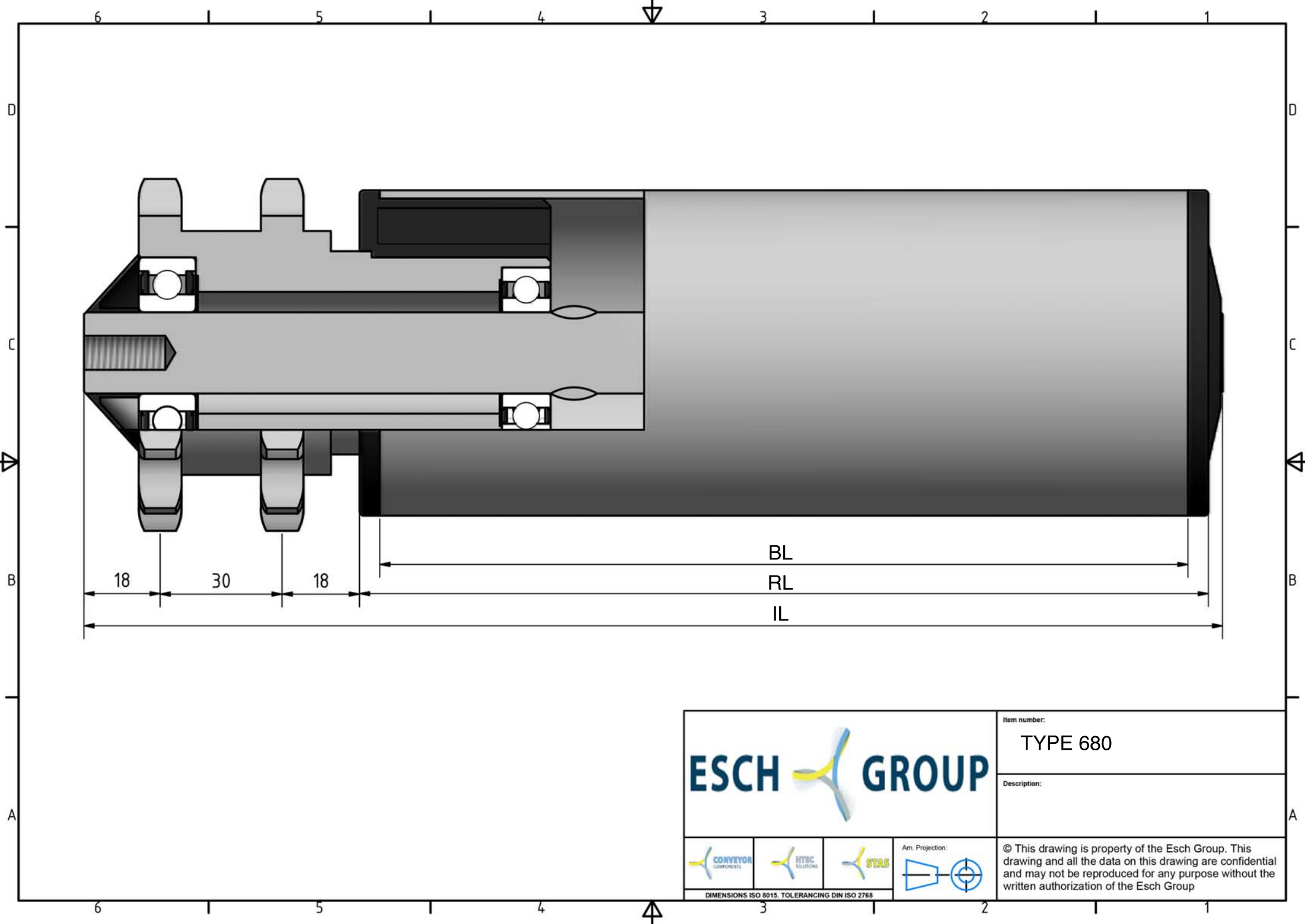
680





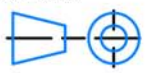


\* DRAAGVERMOGEN BIJ VLAKBELASTING  
GEBASEERD OP AANGEGEVEN RL.

MEMBER OF ESCH GROUP

ESCH GROUP



|   |   |   |   |  |          |
|---|---|---|---|--|----------|
|  |   |   |   | Item number:   | TYPE 680 |
|   |   |   |   | Description:   |          |
|  |  |  |  | © This drawing is property of the Esch Group. This drawing and all the data on this drawing are confidential and may not be reproduced for any purpose without the written authorization of the Esch Group |          |
| <small>DIMENSIONS ISO 8015. TOLERANCING DIN ISO 2768</small>                          |   |   |   |  |          |